



# **WESTERN REGION COMMUNITY RESOURCES BOARD ASSOCIATION**



**2022-2023 PROGRESS REPORT**

## Contents

ACKNOWLEDGEMENT .....	II
ACROYNOMS.....	IV
THE REGION PROFILE.....	I
THE UNIQUINESS OF THE REGION.....	2
REGION ACHIEVEMENTS.....	2
Employment creation.....	2
Capacity building.....	3
Income generating activities.....	4
Small scale farming.....	4
Bee keeping.....	5
Increasing Climate Resilience for rural communities in western region through support to sustainable livelihoods.....	6
Community development.....	7
THREATS TO THE GMA.....	8
Human Wildlife Conflicts.....	8
Encroachment.....	8
CONCLUSION.....	8
RECOMMENDATIONS.....	9

## ACKNOWLEDGEMENT

This document was compiled by the Zambia Community Resources Board Association Secretariat (Mike Mumba, Clarence Muzyamba, Isaac Banda, Mildred Ikwenda, Racheal Nkhoma, Kutemba Sakambuta, Jafe Muzuri, Thelma Nkandu, Bupe Banda and Gracious Lubilo) with great contributions from the NEC publicity person Getrude Mwiba.

The authors would like to express their intense gratitude towards the contributions made by the ZCRBA Senior Technical Advisors: Dr. Rodgers Lubilo and Madam Betty Msimuko for taking time to review the document and many thanks to ZCRBA for the financial assistance to have the document printed. This publication is based on information submitted by various CRBs in the region hence the views expressed here do not reflect the official opinion of ZCRBA.

Published by the Secretariat of the National CRB Association  
Copyright © 2023, Secretariat of the National CRB Association  
Cover photo credit: Schutzgebiete.

This publication may be reproduced for educational or non-profit purposes without special permission from the copyright holders, provided acknowledgement of the source is made.

### **Citation:**

National CRB Association Secretariat (2023) Western Region CRB status Report. A review of progress from 2022-2023.

### **For further information, please contact:**

Secretariat of the National CRB Association

Plot 12494  
PHI Flat, Wezi Kaunda Street  
Police Post Road,

Lusaka Zambia  
E-mail: [secretariatzncrba@gmail.com](mailto:secretariatzncrba@gmail.com)

## ACROYNOMS

CRB	Community Resources Boards
AGM	Annual General Meeting
HWC	Human Wildlife Conflict
ZCRBA	Zambia Community Resources Boards Association
DNPW	Department Of Natioanl Parks And Wildlife
BCP	Bio-Carbon Partners
VAG	Village Action Group
GMA	Game Management Area
WR-CRB	Western Region Community Resources Board
GMETT	Governance Management Effectivenesstracking Tool
TNC	The Nature Conservancy
CBNRM	Community Based Natural Resource Management
KNRT	Kaindu Natural Resources Trust
KAZA TFCA Kavango Zambezi Trans-Frontier Conservation Area.	

## THE REGION PROFILE

The Western Region currently has a total number of 33 Community Resources Board spreading across 14 GMAs namely Mufunta, Nkala bilili, Musele matebo (3,700 sq.km), West Zambezi, Mumbwa, Namwala, Kafue flats, Mulobezi, Kasonso busanga (7,780 sq.km), Lunga luswishi, Sichifulo, Lukwakwa (2,540 sq.km), Chizera (2,280 sq.km), Chibwika-ntambu (1,550 sq.km) GMAs that are buffer zones to the wondrous National parks that

the Regional has. The western region has seven National Parks namely, West Lunga, Blue Lagoon, Sioma Ngwezi, Mosi-oa-Tunya, Liuwa Plain, Lochinvar and Kafue National Parks.

The region is characterized by a wide range of habitats varying from open grassy plains comprising of a mixture of dry to wet grasslands, Miombo woodlands, Swamps, Kalahari, Mavunda dry evergreen forests, Termitaria woodlands, Dambos and Chipya woodlands.

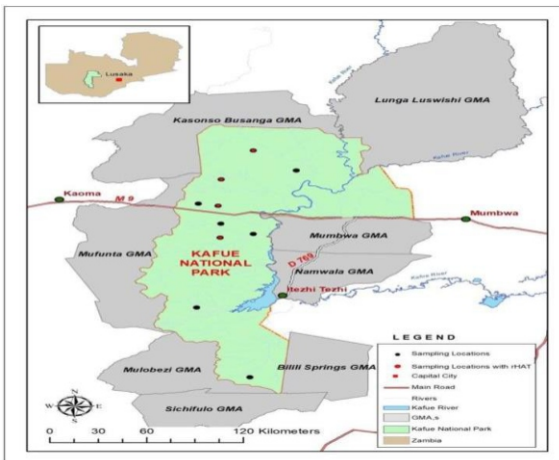


Figure 1: Map of some GMA in the WR-CRBA.

## THE UNIQUENESS OF THE REGION

Western region CRB stands out as an icon of conservation in Zambia for natural resources and resource wildlife organizations in the region. Further, the region is an intersect of GMA in the Kafue Ecosystem Zone.

The region is well known for its magical site Busanga plains that is awesomely attractive to the sights of the tourists. Additionally, diverse species inhabited by the Kafue National Park spice up a significant view to



the region status. The Busanga plains has plenty of animals' species such as bushbuck, puku, wildebeest, oribi, red lechwe, lions' sable and roan antelope.

Western region is also a bright home-based to the wondrous dams like the itezhi- tezhi dam which is a source of hydroelectric power built between 1974 and 1977 east side of the itezhi -tezhi town and the Victoria Falls Power Station is a hydroelectric power plant on the Zambezi River in Livingstone, Zambia. It is located in the third gorge below Victoria Falls and consists of three power stations with a total capacity of 108 megawatts (145,000 hp).

## REGION ACHIEVEMENTS **Employment creation**

Employment is often at the top of any developmental agenda for policy makers, social partners and the civil society, the interventions include direct short-and-long-term job creation programs. This is because labor is more than a factor of production; it is an essential element of any development process, of well-being and social cohesion. Thereby, WRCRB has taken interest in creating employment opportunities for the local people to explore, empower and improve their livelihoods as a way of fighting the many illegal activities that are taking place in the protected areas.

## **Capacity building**

On May 31<sup>st</sup>, 2023, to June 4<sup>th</sup>, 2023, TNC, GRI and Zambia Community Resources Board Association (ZCRBA) collaborated in facilitating a skills Training in Musa camp with intent to build the capacity of the community scouts and wildlife police officers under Nkala GMA in women leadership and empowerment, Gender equality and GBV among which there was 25 men and 4 women of Musa Camp at GRI Centre in Itezhi-Tezhi District and this workshop training program was fully supported by TNC.



Figure 2 training session at Musa camp

## Income generating activities

With support from African Parks and TNC the region continued involving communities from five CRBs in the Kafue ecosystem to introduce them to REDD+ to see if they can work with BCP and so far, Mujimanzovu CRB has shown interest of forming a CFMG as an avenue for Sustainable management of forests and the process is in the pipeline as engagements from both sides have intensified and a needs assessment has been concluded. The western region has hope that the carbon trade in the region will help address climate change because of the communities have known the importance of conserving and protecting the biophysical environment.



## Small scale farming

Western region farming continued to be the best survival ways through which the region has capitalized on for years and this has been a driver for community income generations in the region, many of which are small scale farmers. Farming input support is done by partners like African Parks (AP) through the individual CRBs to help the communities to farm and harvest produce that can be a source of income when sold. The image below shows the small-scale farms produce in the western region communities.



*Figure 4 Small scale farming in western region*

## Bee keeping

Most of the CRBs and CFMGs under western region have continued venturing in Bee keeping as it is one of the most profitable income generating activities and CRBs in the Region. Many local people in the region have benefited from it and this increased more communities to gain interest t in beekeeping as a source of income. Through this initiative

stakeholders and cooperating partners are coming on board to give relevant support to some communities with the setting up beehives and marketing the products with the objective of improving the livelihoods of the local community people in the region. The picture below shows the Beehives sample.



*Figure 5 Community members involved in bee keeping*

## Increasing Climate Resilience for rural communities in western region through support to sustainable livelihoods.

Touring around the western province of Zambia is never complete without having a taste of their local ‘mongu fish’. However, the increasing climate variability in the region has resulted in reduced availability of this famous specialty for locals and visitors.

However, the farmers are always searching for innovative means to protect their livelihoods and create sustainable businesses, from the

digging of communal solar-powered boreholes to aquaculture cooperatives. But they are not sure what to expect in terms of floods and droughts in the coming years, or how severely climate change will affect their lives. It is for this reason that the western Region CRBA has been supporting various communities within the Western Province of Zambia with sustainable livelihood options to increase their resilience and response to climate change impacts.

## Community development

Community development empowers community members and creates stronger opportunities and connection to be able to sustain themselves in line with organizational objectives. To achieve organizational goals, the Western Region CRB Association has continued to implement various actions/activities to fulfil its mission. Below are some of the community development projects that have been implemented.

The Chilafubu, Mulendema and Musukwa CRBs managed to construct houses of the community scouts. For example, in Mweengwa Camp they built:

1. five (5) houses for community scouts
2. and eight (8) more are yet to constructed for the other scouts, respectively.

## THREATS TO THE GMA

### Human Wildlife Conflicts

Wildlife can at times be a danger to community members in GMAs and other protected areas whilst on the other hand can become its greatest natural asset. It is for this reason that the Western Region CRB put in place strategies to help reduce Human wildlife conflict cases/incidents that are occur in the region. Cases are rampant but are rarely reported due to lack of a proper secretariat and necessary tools reporting back to the region has become a challenge. **Encroachment**

Encroachment in the GMAs of the western region CRB is getting out of hand each passing moment especially in Mumbwa GMA due to increasing illegal human settlements and farming sprees that have led to clearance of large portions of natural resources. Consequently, encroachment in the regional GMAs is increasingly becoming a big challenge in natural resource conservation, there is less protection of the natural resources by the communities in the region and less of ownership by the communities which has become a loophole for them to carryout illegal activities in the GMAs which leads back to lack of awareness programs by PA actors hence the increase in encroachment due to expansions of agriculture and charcoal burning.

## CONCLUSION

Western region CRB association continued to stand out as an icon of conservation in Zambia for natural resources and resource wildlife organizations in the region. Further, strengthening the CBNRM approach in promoting transparent, accountable, and inclusive leadership in the CBNRM sector. This will boost the drive for the region to achieve the

primary goal for conservation of its natural resources within the catchment area of the western region and thereby developing plans to help in curbing the many illegal activities that occurs in the conservation fraternity within the region, hence, engaging law enforcement in the many GMAs of the region and ensuring that Sensitization campaigns on the importance of natural resources in the development agendas of the area and its CRBs are done on time.

## RECOMMENDATIONS

- To have awareness programs and other management undertakings in the region.
- Have effective and efficient measures to protect and conserve natural resources.
- To have capacity building in advocacy.

## NOTES

---

---

---

---

---

---

---



**PRINT MATERIAL SPONSORED BY:**



**Zambia Integrated Forest Landscape Project**

Improving lives through Sustainable Management of Natural Resources

